



General Product

About Company

Elite Project Engineering is specialized in Design, Engineering and Procurement services for;

- Oil and Gas
- Petrochemical
- Chemical
- Fertilizer
- Oil Storage Terminals
- LPG Storage Depots
- Power Plants
- Food Processing
- Sugar Mills
- Pharmaceutical

The company is operating under the supervision of senior management having vast experience in Oil & Gas and Petrochemical sectors having its headquarter in China and global offices in United Kingdom, Unites States of America, Canada, Brazil, United Arab Emirates, Pakistan and Nigeria.

In addition to Design and Engineering services, we are capable to take over the complete Procurement (P) part of an EPCC (Engineering, Procurement and Construction and Commissioning) projects either directly from End Users, in Joint Venture with EPCC Contractor and or from EPC Contractor to make sure seamless supply chain management of all project materials from the stud bolts to the process equipment and from the pipeline to the drilling rig depending on the nature of project either its of Oil & Gas (Exploration, Gas Compression, Gas Processing, LPG Extraction, Oil Refinery, Oil Storage Depot) or Petrochemical, Chemical, Fertilizer, Power Plant, Food Processing, Sugar Mill, Pharmaceutical and / or allied industries.

Elite clients always enjoy the seamless services through our highly professional representatives who are assigned delicately to one project at a time to oversee client contracts, supplier contracts and deliveries.

MISSION

Elite is a leader in providing value-added Design, Engineering and Procurement services by creating a successful partnership with all stakeholders. Elite believe in lasting relationships with all stakeholders by exceeding their expectations and gaining their trust through meticulous performance by every member of the organization with the strong commitment to Quality, Health, Safety and Environment (QHSE).

VISION

To be the most preferred and trusted partner of our customers in the industry with special focus and emphasis on delivering quality products & services.

CORE VALUES

Quality: It is our primary focus to produce and deliver superior quality products and services.

Commitment: What we commit, We deliver.

Teamwork: We believe in teamwork which is the most important element to accomplish the set objective.

Customer Satisfaction: To achieve customer satisfaction with our Quality, Commitment and Teamwork.



Process Equipment



Gas Metering & Regulating System



Metering & Regulating System Of Self-used



Skid-mounted Oil Mass Flow Meter



Pressure Control System



Mobile Injection, Dissolution & Dilution System



Turbine / Ultrasonic Metering System



Skid-mounted Pressure Reduction Metering Station



Skid-mounted CNG Pressure Reducing Station



District Regulator Cabinet



City Gas Gate Station/Storage & Distribution Station



Gas Gathering Skid



Filter Separator



Gas Scrubber



Pig Launcher and Receiver



Pressure Vessel

Oilfield Equipment



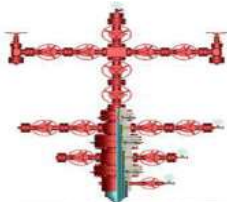
Drilling Rigs



Truck Mounted Drilling Rig



API Choke Manifold



Wellhead And Christmas Tree Equipment



BOP



Desander



Shale Shaker



Drawworks



Mud Pumps



Top Drive



Swivel



Drilling Bits



API 5CT Casings



Coupling



Heavy Weight Drill Pipe

Oilfield Equipment



Drill Pipes



Downhole / Mud Motor



Drill Collar



Stablizers



Pup Joints



Tool Joints



Oil Well Cement

Mechanical / Electro-Mechanical Equipment



Steam Turbine



Gas Turbine



Hydro Power Turbine



Wind Turbine & House



API Standard Pumps



Centrifugal Pumps



Vertical Turbine Pumps



Chemical Process Pumps



Diaphragm Pumps



Rotary Air Compressor



Electric Screw Air Compressor



Single Oil Free Screw Air Compressor



Rotary Screw Air Compressor



Portable Air Compressor



Mobile Compressor

Mechanical / Electro-Mechanical Equipment



Diesel Generator



Silent Diesel Generator



Natural Gas Generator

Fire Fighting Equipment



Engine Driven Fire Water Pump



Electric Driven Fire Water Pump



Foam Water Tank



Fire Alarm System



Fire Sprinkler



Fire Hydrant System

LPG Equipment



Quick Pull Away Coupling



Cylinder Valve



HRV



PRV Manifold



PRV



Filler Valve



Excess Flow Valve



Back Pressure Check Valve



Rotogage



LPG Tank



LPG Compressor



LPG Pump



LPG Dispenser



LPG Filling Scales

Cathodic Protection



Transformer Rectifier



Junction Box



Junction Box W



Magnesium Anodes



Magnesium Anode For Cathodic Protection



Pre-Packaged Magnasim Anodes



Tubular Anodes



Cathodic Protection Cable



Outer Wrapping Tape



PE Anti Corrosion Tape



Aluminum Wrapping Tape



Wrapping Tape



Heat Shrink Sleeves



Liquid Adhesive

Electric & Instrumentation



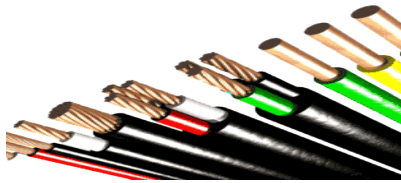
Rectifier



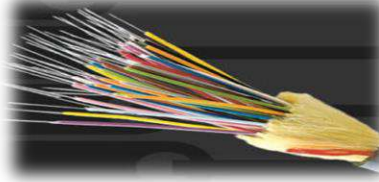
Switch Gear



Electric Motor



Electric Cables



Fiber Optics



Capacitors



Transmitter



Thermos couple



Flow Meter



Pressure Gauges



Temperature Gauge



Level Gauges



PLC Hitachi



Siemens PLC



Allen Bradley PLC Prog;

Heavy / Earthmoving & Construction Equipment



Crawler Crane



Mobile Crane



Overhead Crane



Tower Cranes



Truck Crane



Electric Fork Lifter



Wheel Loader



Backhoe Loader



Skid Steer Loader



Crawler Excavator



Bulldozer



Road Roller



Road Paver



Pipe Layers



Concrete Mixing Truck

Elite

PROJECT ENGINEERING

Zhejiang Elite Project Engineering Co., Ltd.
Wenzhou Elite Flow Control Co., Ltd.

Corporate Headquarter:

Office No. 903, 9th Floor, Zhonggou International Office Building, Yangguangdadao Street., Oubei Town, Yongjia, Wenzhou, Zhejiang Province, People's Republic of China.

Tel: +86 (0) 577 66965398

Email: contact@eliteprojectengineering.com

Email: elite@eliteflowcontrol.com

China Manufacturing Facility:

No. 425, Zhangbao West Road, Dongou Industrial Zone, Oubei Street, Yongjia County, Wenzhou City, Zhejiang Province, People's Republic of China.

Email: sales@eliteflowcontrol.com

United Kingdom:

Unit 1, Winghay Close, Stoke-on-Trent, Staffordshire, England, ST6 4DU, United Kingdom.

Tel: +44 (0) 1782 978341 / +44 (0) 7465 965031

Email: efc@eliteflowcontrol.uk

Nigeria:

Suite # 204, 5, Force Road, Lagos Island, Opposite Tafawa Balewa, Lagos Island, Lagos, Nigeria.

Tel: +234 (0) 915 2248317

Email: nigeria@eliteflowcontrol.com

USA:

4840 Irvine Blvd Ste 205, Irvine, CA 92620, United States of America.

Tel: +1 (0) 514 594 1696

Email: contact@eliteprojectengineering.com

Canada:

28, Ferguson Street, Toronto, Canada.

Tel: +1 (0) 514 594 1696

Email: Sales.canada@eliteflowcontrol.com

Pakistan:

B 69, Block 18, KDA Scheme 24, Gulshan Iqbal, Karachi, Pakistan.

Tel: +92 213 4820542 / +92 (0) 332 3767598

Email: ah@eliteflowcontrol.com

